



ProTEC™

CONCRETE BACKER BOARD



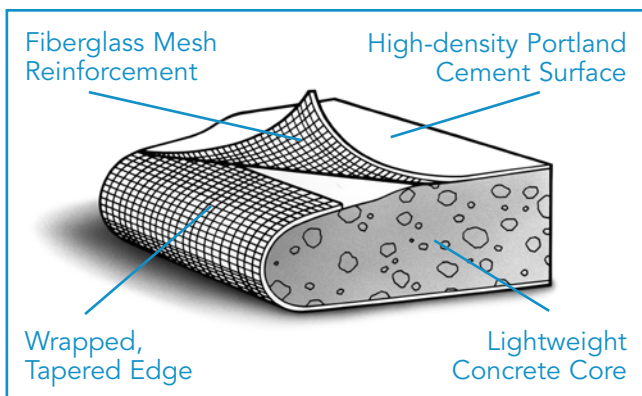
Floors • Countertops • Walls & Ceilings • Exteriors • Residential & Commercial

The Strength Behind the Beauty



FinPan

PROTEC™ CONCRETE BACKER BOARD



SIZE & PACKAGING			
Thickness	Width	Length	No. of Pieces
1/4"	3'	4', 5', 64", 6', 8'	50
1/2"	3'	4', 5', 64", 6'	40
1/2"	3'	8'	25
5/8"	3'	5', 64", 6'	30
5/8"	3'	8'	25

ProTEC™ Concrete Backer Board is a superior underlayment for interior and exterior construction applications. It is made of durable Portland cement, alkaline resistant fiberglass mesh, and lightweight aggregate. ProTEC provides a stable, long-lasting foundation for ceramic tile and other facing materials used on floors, walls, ceilings, countertops and exteriors. Fin Pan, Inc. patented the continuous manufacturing process for concrete backer board over 30 years ago.

Unlike wood or gypsum-based products, ProTEC is unaffected by water, moisture or steam and will not decay, warp, rot or soften. ProTEC is the ideal underlayment for areas constantly exposed to water such as shower enclosures, around bathtubs, sinks, as well as swimming pool and whirlpool decks.

ProTEC Concrete Backer Board provides a strong, stable substrate for high impact areas such as foyers, kitchens, bathrooms and utility rooms. The 1/2" board offers a wrapped, tapered edge for nail or screw penetrations closer to the edge.

The thinner 1/4" board was specifically designed for today's dramatic new tile, marble and stone applications on floors and countertops. When applied under ceramic floors, 1/4" ProTEC reduces the need to shorten doors over thresholds and reduces level variations when abutting carpet and other flooring materials. ProTEC 1/4" is approved for residential and light-commercial flooring applications.

Limitations

ProTEC Backer Board is water resistant, but allows water and water vapor passage. If total waterproofing is required, the use of a waterproofing membrane is mandatory.

ProTEC units are not to be used as structural load-bearing members.

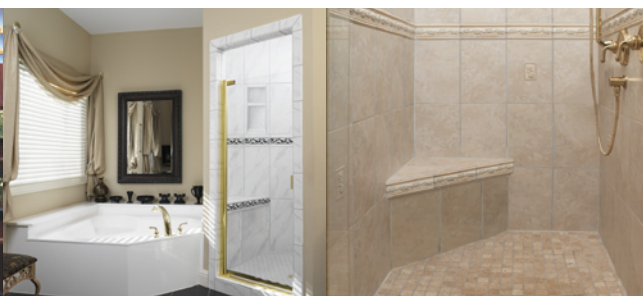
ProTEC must never be used over cushioned vinyl flooring. This type of flooring must be removed before ProTEC is installed.

FEATURES

- 1/4", 1/2", and 5/8" thicknesses
- Sizes up to 8'
- Wrapped, tapered edge
- Moisture and mold resistant
- Contains Portland cement, fiberglass mesh, and lightweight aggregate
- Approved for interior and exterior use
- Low coefficient of expansion and contraction

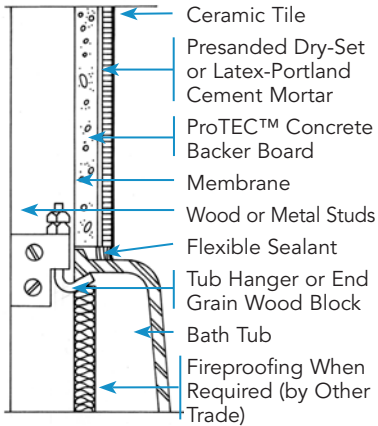
BENEFITS

- Easy to cut, score and install
- Less susceptible to environmental changes
- Will not soften, rot, swell or delaminate
- Can be fastened with nails or screws
- Increases in strength and hardness over time
- Vermin proof



TYPICAL DETAILS

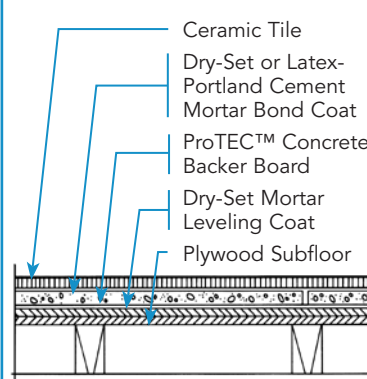
Walls, Bath



Materials

- ProTEC™ Concrete Backer Board
- 2" glass fiber mesh tape
- Dry-set mortar, ANSI A118.1
- Latex-portland cement mortar, ANSI A118.4
- Grout, ANSI A118.6 (specify type)
- Elastomeric caulking, silicone rubber
- Metal Studs, ASTM C645

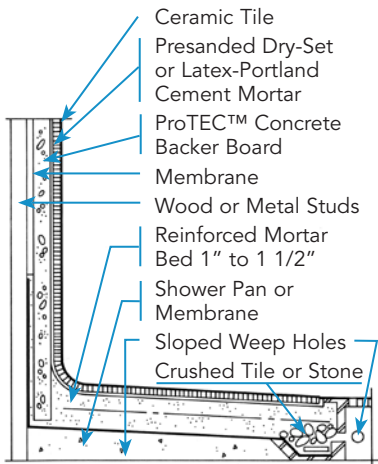
Floors, Interior



Materials

- ProTEC™ Concrete Backer Board
- 2" glass fiber mesh tape
- Dry-set mortar, ANSI A118.1
- Grout, ANSI A118.6 (specify type)
- Latex-portland cement mortar, ANSI A118.4

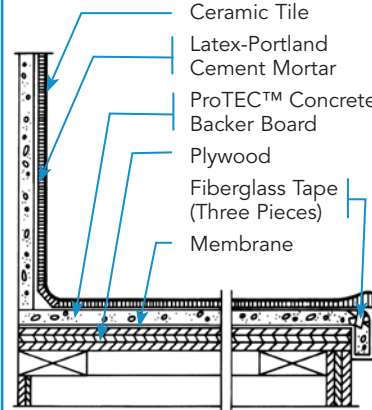
Walls, Shower



Materials

- ProTEC™ Concrete Backer Board
- 2" glass fiber mesh tape
- Dry-set mortar, ANSI A118.1
- Latex-portland cement mortar, ANSI A118.4
- Grout, ANSI A118.6 (specify type)
- Metal Studs, ASTM C645

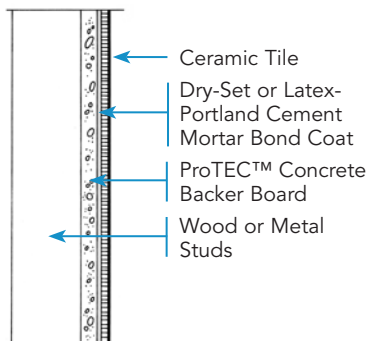
Countertops



Materials

- ProTEC™ Concrete Backer Board
- 3/4" exterior grade plywood base
- 1-1/4" galvanized roofing nails applied 6" o.c.
- Latex-portland cement mortar, ANSI A118.4
- Latex-portland cement grout, ANSI A118.6 or epoxy ANSI A118.3
- 15 lb. roofing felt or 4 mil. polyethylene film or duplex-type reinforced asphalt paper membrane

Walls, Interior



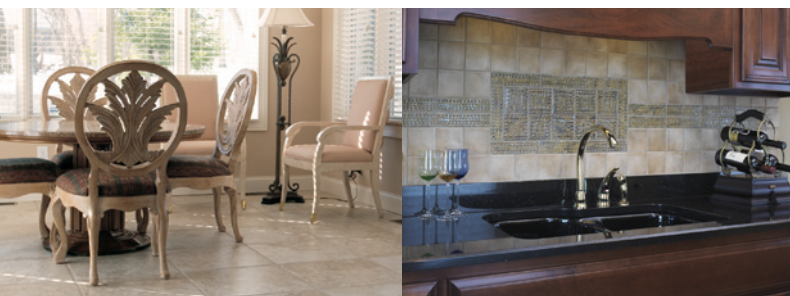
Materials

- ProTEC™ Concrete Backer Board
- 2" glass fiber mesh tape
- Dry-set mortar, ANSI A118.1
- Grout, ANSI A118.6 (specify type)
- Latex-portland cement mortar, ANSI A118.4

Find out about the complete line of of FinPan building products:

- ProPanel Lightweight Waterproof Backer Board
- PreFormed Underlayment Components
- Util-A-Crete Concrete Backer Board

Just visit our website at www.finpan.com



ProTEC™

CONCRETE BACKER BOARD

PERFORMANCE PROPERTIES

1/2" ProTEC Concrete Backer Board

Complies with ANSI A 118.9 for Nailable, Screwable Backerboard or Underlayment



Property	Test Value	Minimum Value	Result
Weight, lbs./sq. ft.	2.9	N/A	N/A
<i>Shear Bond Strength (7 day cure) – CBU to CBU Saturated</i>			
ANSI A118.1 – Dry Set Portland Cement Mortar, min. psi.	258	50	Pass
ANSI A118.4 – Latex Portland Cement Mortar, min. psi.	208	50	Pass
ANSI A136.1 – Organic Adhesive Type*, min. psi.	91	50	
<i>ASTM D2394 Compression Indentation</i>			
Compressive Stress, min. psi.	5000	1250	Pass
Residual Indentation, max. in.	0.045	0.05	Pass
ASTM D1037 – Falling Ball Impact, min. in.	12	12	Pass
ASTM D1037 – Fastener Holding, min. saturated	100	90	Pass
ASTM E84 – Flame Spread Max.	0	10	Pass
ASTM E84 – Smoke Developed	5	10	Pass
NFPA 286 – Evaluation of Wall & Ceiling to Room Fire Growth	0		Pass
<i>ASTM Flexural Strength (Saturated) – Long Dimension Perpendicular to Joists</i>			
Smooth Side Up	1260	750	Pass
Smooth Side Down	1100	750	Pass
<i>ASTM D1037 Linear Variation / Moisture Movement</i>			
Machine Direction, max. %	0.03%	0.07%	Pass
Cross-Machine Direction, max. %	0.04%	0.07%	Pass
ASTM C666 (Procedure B) – Freeze-Thaw Cycling, Min. cycles	100	25	Pass
ASTM D3273-94 – Mold Resistance			Pass

1/4" ProTEC Concrete Backer Board

Standard Method for evaluating ceramic floor installation system ASTM C 627 Light Commercial

Certification, Codes

Recognition

- NTA Testing Laboratories, Inc.

Test Report:

1/2" ProTEC – TCC 061306-24

1/4" ProTEC – TCC 022508-18

Fastening

Wood Studs: These must be 3 1/2" deep and no more than 16" o.c. Use conventional 1 1/2" galvanized roofing nails, preferably screw type, spaced a maximum of 8" apart, or 1 1/4" Hi-Lo® type-S-point screws

Steel Studs: These must be 20-gauge or heavier and no more than 16" o.c. When using 20-gauge studs, use a corrosion resistant 1 1/4" Hi-Lo bugle head type-S-point screw or 1 1.4" RocOn type-S-point screw. When using

18 to 20 gauge studs, use a corrosion resistant 1 1/4" #3 screw with a type S-12 self-drilling point or a corrosion resistant screw with a self-embedding head and a self-drilling point. All screws must be spaced a maximum of 8" apart.

35-Year Limited Warranty

With over 30 years of experience manufacturing concrete backer board, FinPan, Inc. is confident enough in its product to provide the only 35-year warranty in the business. FinPan warrants that this product meets or exceeds applicable manufacturing standards in force at the time of manufacture. And FinPan will, at its option, repair or replace any product which proves defective due to manufacturing.

Contact FinPan, Inc. for complete warranty details.

The Strength Behind the Beauty



3255 Symmes Road • Hamilton, OH 45015
800.833.6444 • Fax 513.870.9606
www.finpan.com

ProTEC Backer Board is a trademark of FinPan, Inc.
©2012 FinPan, Inc.