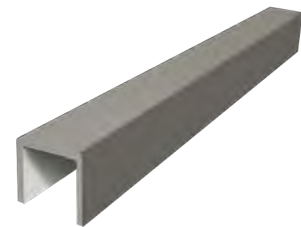




*The Strength
Behind the Beauty*

PreFormed® Curb Overlay & Full-Foam Curbs

Curb Overlays unique design is ideal for traditional 2" x 4" wood curb stack. They are made from high-density expanded polystyrene with a liquid waterproof coating. They feature a fiberglass mesh reinforcing for strength and bonding power.



Full-Foam Curbs replace the traditional 2 x 4 wood stack and install directly to floor substrate. They are made from high-density expanded polystyrene with a liquid waterproof coating.

Curb Overlays

PF-201 / 48"
PF-202 / 96"
PF-204 / 72"

Full-Foam Curbs

PROCURB5 / 5'
PROCURB8 / 8'

Custom Overlays and Full-Foam curbs available for large projects.



*The Strength
Behind the Beauty*

PreFormed® Curb Overlays & Full-Foam Curbs

Installation

Curb Overlay

Install waterproof membrane or pan liner over 2" x 4" curb structure.

Cut curb overlay to dimension of opening.

Coat inside of curb overlay with thinset mortar and place over pan liner.

Fasten to curb structure using a non-corrosive spiral nail/washer fastener. Only fasten on outside of shower curb area

Install tile using a modified thinset mortar.

Full-Foam Curb

Cut curb to dimension of opening.

Using a 1/4" x 1/4" notched trowel, apply modified thinset to floor area and bottom of curb and set into place.

Apply a 1/2" bead of polyurethane sealant to inside joint of curb and shower pan to ensure waterproof integrity at joint.

Install tile using a modified thinset mortar.

