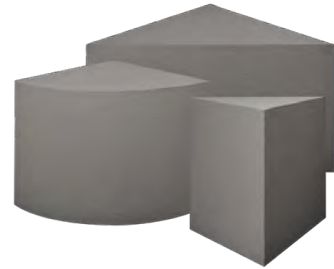




*The Strength  
Behind the Beauty*

## PreFormed® Seats & Benches

Waterproof, easy to install  
and ready to tile in minutes.

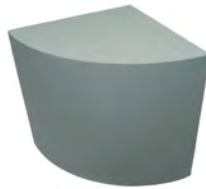


PreFormed Seats and Benches are  
constructed of high density expanded  
polystyrene and liquid waterproof coating.

Also available in custom shapes and sizes.



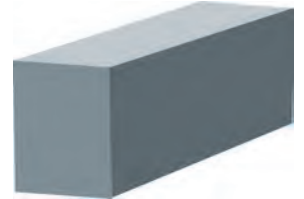
Triangle  
PF-402 / 16" x 16"  
PF-403 / 23" x 23"



Triangle Convex  
PF-404 / 16" x 16"



Square  
PF-410 / 12" x 12"



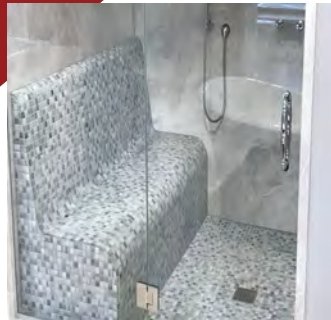
Bench  
PF-420 / 11.5" x 35"

All standard seats and benches are 20" in height.



*The Strength  
Behind the Beauty*

## PreFormed® Seats and Benches



### Installation

Dry fit seat to be sure it fits snug against the walls. The walls must be square and plumb.

Remove seat and completely waterproof the wall and floor behind the seat with a liquid waterproof membrane. Allow waterproofing to completely dry.

Apply modified thinset to the wall and floor behind with a 1/2" x 1/2" square notched trowel. NOTE: on the wall, trowel the mortar horizontally, slide the seat in the mortar using the NTCA trowel and error method, and embed into mortar on the floor, achieving complete coverage.

Once the thinset is set, tape all of the seams of the bench with fiberglass reinforced mesh and liquid waterproof membrane.

As an alternative, a polyurethane sealant can be used to seal all joints where the seat meets the walls and floor. FinPan specifies SIKA brand Sikaflex 11 FC. Silicone should never be used.

Install tile using a modified thinset mortar.

