

*"Simple Tileable Solutions"*



# PRODUCT CATALOG

*The Strength Behind the Beauty*



**ARCAT**  
**@AEC DAILY.**



# Underlayments



## ABOUT US

In 1975 FinPan, patented the continuous manufacturing process for concrete backerboard. We have successfully grown our product portfolio which incorporates additional products that promote simple installation designs and customizations for both the inside and outside of your home and business. Our goal is to consistently provide superior quality driven products and offer technical expertise to our customers and end-users.

## SERVICES

For three generations, this family run business has been instrumental in developing innovative products that transformed the tile installation industry. That mission continues today. FinPan offers "Fashion and Function" for contractors, builders and homeowners looking for affordable lightweight installation products.

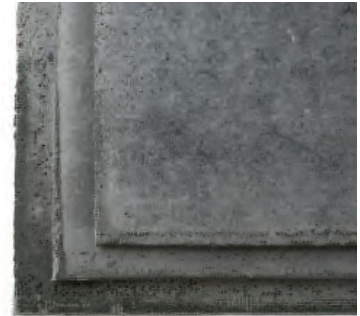
### Util-A-Crete® and ProTEC™ Concrete Backer Board

Util-A-Crete is FinPan's original concrete backer board and with its 16x10 mesh count has proven to be the strongest in the industry. ProTEC, with its 8x10 mesh count is a second-generation board that is cost competitive with many of today's other concrete boards. Both are excellent underlayments for interior and exterior applications. Boards are made of durable Portland cement, alkaline resistant fiberglass mesh and lightweight aggregate.

- ProTEC features an enhanced fiberglass mesh wrapped edge to prevent spinout and crumbling
- Moisture and mold resistant
- Wrapped, tapered edge

#### Util-A-Crete

FP#	Size	Boards Per Pallet
208104	¼" x 3' x 4'	50
208105	¼" x 3' x 5'	50
208108	¼" x 3' x 8'	50
208109	½" x 3' x 4'	40
208110	½" x 3' x 5'	40
208112	½" x 3' x 6'	40
208113	½" x 3' x 8'	25



#### ProTEC

FP#	Size	Boards Per Pallet
208128	¼" x 3' x 4'	50
208131	¼" x 3' x 5'	50
208132	¼" x 3' x 64"	50
208135	½" x 3' x 4'	40
208130	½" x 3' x 5'	40
208133	½" x 3' x 64"	40
208134	⅝" x 3' x 5'	30



# TI-ProBoard®

## TI-ProBoard® Structural Composite Board

TI-ProBoard is a structural composite board specifically designed for tiling decks and balconies. TI-ProBoard is unaffected by expansion, contraction and other weather conditions and acts as a structural replacement for deck boards. TI-ProBoard is recognized in the TCNA Handbook as a Structural Ribbed Self-supporting Board (SRSB).

- Replaces deck boards
- Commercial floor rating
- Attaches directly to joists
- Only 3/8" thick

FP#	Size
TIPROBOARD8	3/8" x 1' x 8'
TIPROBOARD12	3/8" x 1' x 12'
TIPROEDGING	8' Perimeter Edge Profile
TISCRW250	1 1/2" Panhead Screws (250 box)



## TI-ProBoard Optional Waterproofing Accessories

Most building codes require an approved sheet membrane to be used over actual living areas.

### ClearPath® Curbless Shower System

ClearPath enables contractors to install a barrier-free shower directly on top of the floor joists without modifications to floor system. Using the strength of TI-ProBoard, simply install kit and float a mud-bed on top of TI-ProBoard. ClearPath kits include TI-ProBoard, drain plate with integrated drain assembly, WaterArmor® waterproofing sheet membrane, perimeter edge protectors and fasteners.

- Easy to install
- Commercial floor rating
- No modifications to floor joists
- Meet ADA compliant designs

FP#	Size
CP3672 ABS or PVC	36" x 72"
CP48 ABS or PVC	48" x 48"
CP4896 ABS or PVC	48" x 96"
CP60 ABS or PVC	60" x 60"
CP72 ABS or PVC	72" x 72"
CP96 ABS or PVC	96" x 96"
CPDPABS	Drain Plate ABS
CPDPPVC	Drain Plate PVC



FP#	Square Grates	FP#	Linear Drain Grates
CP8212SNQ	Antique Bronze Cast Metal	CL-LD-60	ClearLine Trough 60"
CP8212SRBQ	Oil Rubbed Bronze Cast Metal	CL-G-60-LS	Long Slot Grate 60"
CP8212SSCQ	Stainless Steel Cast Metal	CL-G-60-VS	Vertical Grate 60"
CP8212SSQ	Matte Steel Cast Metal	CL-G-60-REC	Small Rectangle Grate 60"
CP8212SMQ	Matte Black Cast Metal		



Matte Black Cast Metal



Stainless Steel Cast Metal



# Shower Systems

## ProPan® Shower Pan and Curb

ProPan Shower Pans are made from high-density polystyrene with a liquid applied waterproof coating. ProPan adheres to industry standards with ¼" per foot slope to integrated drain assembly. ProPan comes standard with full-foam curb for on-site assembly. The new compression drain option offers on-site installation of the drain assembly for more flexibility in the field. Comes standard with EBBE® square drain riser and grate. **Custom sizes available.**



- Waterproof per ANSI A118.10
- Ready-to-Tile
- Modifiable in field
- UPC rated by IAPMO

FP#	Size	FP#	Description
PRO500 ABS, PVC, or COM	48" x 48"	PF008	Custom Shower Pan
PRO501 ABS, PVC, or COM	36" x 60"	PROEXT	24" x 48" Extension
PRO502 ABS, PVC, or COM	36" x 48"	PRORAMP	13.5" x 60" ADA Ramp
PRO503 ABS, PVC, or COM	48" x 60"		
PRO504 ABS, PVC, or COM	38" x 66"		

**Note:** Drains available in ABS, PVC and compression, specify upon order. Curb size is located on second listed dimension. All standard pans are centered drain off dimensions except for PRO504, drain at 19" and 13" from end.

## ProPan® Shower Pan Kit w/WaterArmor Waterproofing Sheet Membrane

Complete fully bonded, watertight shower system. Contains ProPan, curb, WaterArmor® bonded sheet waterproofing membrane, banding tape and inside/outside corners, SIKA Flex 11 FC polyurethane and EBBE® square drain riser and grate.



FP#	Size
PROWPMKIT500 ABS, PVC, or COM	48" x 48"
PROWPMKIT501 ABS, PVC, or COM	36" x 60"
PROWPMKIT502 ABS, PVC, or COM	36" x 48"
PROWPMKIT503 ABS, PVC, or COM	48" x 60"
PROWPMKIT504 ABS, PVC, or COM	38" x 66"

# Shower Systems

## PreFormed® Shower Pan

PreFormed Shower Pans are made from high-density polystyrene with a liquid applied waterproof coating. PreFormed adheres to industry standards with ¼" per foot slope and comes standard with integrated side splash walls, curb and drain assembly built-in. Come standard with EBBE® square drain riser and grate. **Custom sizes available.**

- Waterproof per ANSI A118.10
- Ready-to-Tile
- DIY Friendly
- UPC rated by IAPMO



FP#	Size
PF110 ABS or PVC	32" x 60"
PF111 ABS or PVC	34" x 48"
PF112 ABS or PVC	36" x 36"
PF113 ABS or PVC	36" x 42"
PF114 ABS or PVC	36" x 48"
PF115 ABS or PVC	36" x 60"
PF116 ABS or PVC	42" x 42"
PF117 ABS or PVC	48" x 48"
PF007	Custom

**Note: Drains available in ABS or PVC, specify upon order. All standard pans are center drained off pan dimensions and curb are located on second listed dimension.**

## ProPan & PreFormed EBBE® Drain Grate

All ProPan and PreFormed Shower Pans comes standard with EBBE Square Drain Riser and Brushed Nickel grate. Drain grates available in other colors, specify upon order.

FP#	Square Grate	FP#	Square Grates
E4400	4" Square Drain Riser	E4407	4" Oil Rubbed Bronze
E4401	4" Polished Chrome	E4408	4" Brushed Bronze
E4402	4" Satin Gold	E4409	4" Polished Nickel
E4403	4" Black Chrome	E4410	4" Satin Nickel
E4404	4" Brushed Nickel	E4411	4" Matte Black
		E4412	4" Champagne Gold



Polished Chrome



Matte Black



**Note: Linear drains are available for both ProPan and PreFormed Shower Pans. These will be considered custom fabrication. Call for pricing and availability.**

# PreFormed

## PreFormed® Niches

PreFormed Niches unique in-wall design allows them to be tiled with the same tile as the walls. They are made of one-piece construction and are waterproof. The square corners make it easier for tiling. Niches have a natural slope and are 3.5" in outside depth. **Custom niches available.**



- Waterproof per ANSI A118.10
- Ready-to-Tile
- Install in minutes
- ½" flange attaches to studs

FP#	Size
PF301	Square 12.25" x 12.25" Shelf
PF304	Wide Combo 6.25" x 12.25" and 12.25" x 12.25" Shelf
PF305	Narrow Combo 6.25" X 8.25" and 12.25 x 8.25" Shelf
PF306	Mega Combo 20.5" x 12.25" Shelf
PF308	Soap 8.25" x 8.25" Shelf

## PreFormed® Seats & Benches

PreFormed Seats and Benches are constructed of lightweight, high-density expanded polystyrene and a liquid waterproof membrane coating. They are 20" in height and install in a fraction of the time required for traditional methods. **Custom seats available.**



- Waterproof per ANSI A118.10
- Ready-to-Tile
- Install in minutes
- Resistance to mold

FP#	Size
PF402	Triangle 16" x 16"
PF403	Triangle 23" x 23"
PF404	Convex 16" x 16"
PF410	Square 12" x 12"
PF420	Bench 11.5" x 35"
PF400	Custom

# PreFormed

## PreFormed® Curb Overlays & Full-Foam Curbs

PreFormed Curbs Overlays unique design fit over the traditional 2x4 wood stack. They are reinforced with a fiberglass mesh to increase strength and bonding power. PreFormed Full-Foam curbs replace traditional 2x4 wood stack and install directly to floor substrate.

- Waterproof per ANSI A118.10
- Ready-to-Tile
- Install in minutes
- Modifiable in field



FP#	Size	FP#	Size
PF201	48"	PROCURB	5'
PF202	96"	PROCURB	8'
PF205	48" No Mesh		
PF207	96" No Mesh		

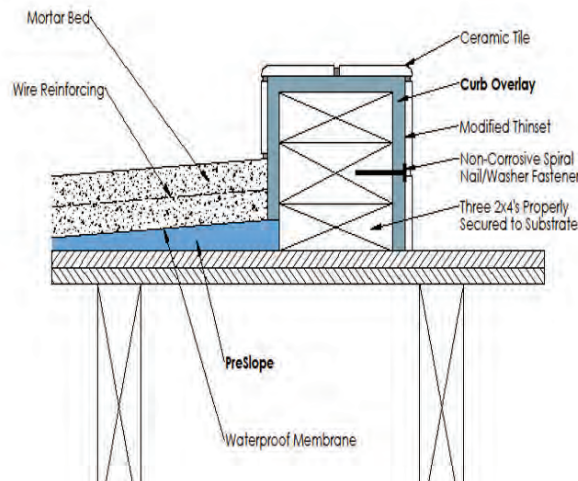
## PreFormed® Slopes

PreFormed Slopes are designed to create the UPC required slope under a waterproofing membrane in traditional mudbed applications. Slopes allow for easy installation of pan liner and mortar bed in one day. They allow the mortar bed to drain properly and saves time by eliminating sloped mortar bed that goes under the pan liner. Sold in case quantities only.

- Code required 1/4" slope
- Easy to cut and install in minutes



FP#	Size	Quantity
PF102	24" x 48" (3/4" x 1/4" slope)	24 Case



# Waterproofing

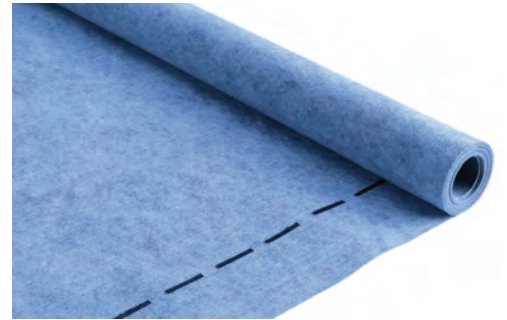
## WaterArmor® Liquid and Sheet Waterproofing Membrane

WaterArmor Liquid Waterproofing is a 100% acrylic based, ready-to-use formula. It can be brush, roll or trowel applied to provide a barrier resistant to air and water. WaterArmor Sheet Waterproofing Membrane is 2m (6.5') wide and reduces seams in the shower.

- Meets ANSI A118.10
- Anti-Fracture membrane
- Type III air barrier
- Vertical and Horizontal surfaces
- Excellent tensile bond
- Antimicrobial protection



FP#	Size
WATER025	Liquid Quart
WATER100	Liquid Gallon
WATER500	Liquid 5 Gallon
WPM1000	Sheet 2m x 20m (6.5' x 65.6') Roll
WPM1001	Sheet Interior Corners (1 pair)
WPM1002	Sheet Exterior Corners (1 pair)
WPM1003	Sheet Pipe Seals (1 pair)
WPM1004	Sheet Mixing Valve Seal

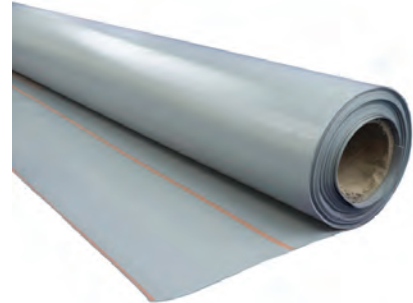


## PVC Shower Pan Liner

PVC Shower Pan Liner is a 40 mil PVC membrane used in full mortar bed shower installations.

- UPC listed
- Meets ASTM D4551

FP#	Size
P1055	PVC Shower Dam Corners 3" x 3"
NC-1351	5' x 50' roll
NC-1353	6' x 50' roll



## Polyurethane Adhesive and Sealant

A one component moisture cure polyurethane adhesive and sealant of permanent elasticity.

- Fast cure rate
- High durability and elasticity

FP#	Size	Quantity
PRO100	10.1 oz cartridge	each
PRO105	10.1 oz cartridge	24 case



## Fiberglass Mesh Tape

The 2" wide roll is specifically designed for sealing joints on interiors. The 6" roll is for exterior concrete backer board installations. Sold in case quantities only.

FP#	Size	Quantity
UACTP2	2" x 100' roll	24 case
UACTP6	6" x 100' roll	6 case

