



ClearPath® Curbless Shower System

Where Fashion Meets Function & Safety

In recent years, curbless shower designs have surged in popularity across residential and commercial bathrooms. This modern approach to shower construction eliminates the traditional raised threshold, resulting in a sleek, seamless transition from bathroom floor to shower area. Homeowners and designers alike are drawn to the clean, contemporary look that curbless showers offer, which complements a wide range of interior styles—from minimalist to luxurious spa-inspired aesthetics.

Beyond visual appeal, curbless showers provide significant functional advantages. They enhance accessibility for individuals of all ages and abilities, making them an ideal choice for aging-in-place designs or households with mobility concerns. According to recent industry data, approximately 6.98 million fall injuries occur annually, with 22.7% happening in bathrooms. This translates into around 1.58 million bathroom-related fall injuries each year. Bathrooms are particularly dangerous for older adults, one study showed 10% of fall-related fractures in elderly patients were associated with bathroom or shower incidents. The absence of a curb reduces potential tripping hazards, offering a safer and more convenient experience. As universal design principles continue to influence remodeling trends, curbless showers are becoming a practical and stylish solution.

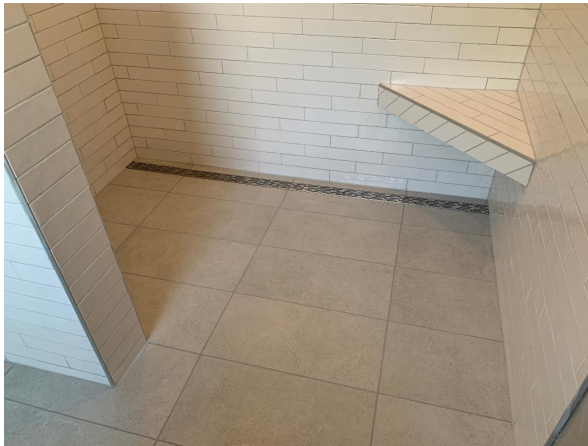
The growing demand for curbless showers reflects a broader shift toward open, barrier-free living spaces in home design. Builders and remodelers are increasingly incorporating these showers into new builds and renovations to meet both lifestyle and resale value expectations. With their blend of form and function, curbless shower designs are not only a design trend, they are becoming a lasting standard in modern bathrooms.

Over twelve years ago, FinPan recognized a void in the market for a simpler approach to curbless showers and introduced the ClearPath® Curbless Shower System. Before its introduction, the common method was to remove the existing flooring and then cut and modify floor joists in an effort to achieve a level entry design. These structural modifications to the floor put a

great deal of responsibility on the flooring/tile contractor. Engineers or architects needed to be, or should have been, involved in the projects to ensure proper structural support was built back into the floor. The ClearPath system revolutionized how curbless shower pans could be built. With ClearPath, no more costly and structural changes to the floor system were required. The system simply installs directly on top of the floor joists with no modifications required to achieve a level entry design.

ClearPath is just another product innovation that FinPan introduced to the market over its 50 year history. From where it all started with the invention of the first continuous manufacturing line for concrete backerboard, to bringing the first one-piece PreFormed® ready-to-tile Niche to market in 1999, FinPan has been a leader in the industry over its time span. Visit finpan.com for more information on ClearPath and the entire line of "Simple Tileable Solutions" from FinPan. We'd love to discuss with you on how you can become a distributor of the entire line of FinPan products.

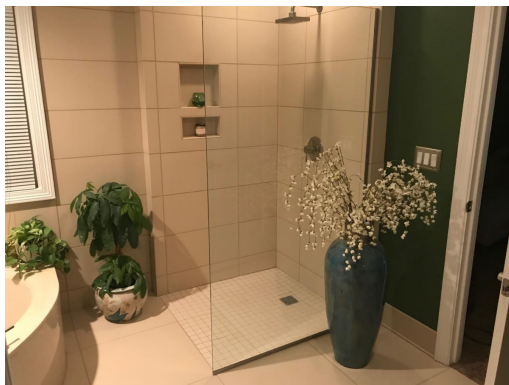
VISIT OUR **NEW** WEBSITE @ FINPAN.COM



ClearLine® Linear Shower Trough

The ClearLine® Linear Trough adds modern flair to the ClearPath® Curbless Shower System. Its low profile design fits seamlessly with the system and is available in a 60" stainless steel field modifiable size.

It pairs perfectly with today's popular large format tile shower designs.



Curb...less Appeal

One of the most popular shower trends in the market today is curbless entry. A study from the American Institute of Architects, AIA, shows that doorless, no threshold showers lead the trend



Structural Design

The foundation of the ClearPath Curbless Shower System starts with TI-ProBoard Structural Underlayment or Structural Ribbed Self-supporting Board (SRSB). SRSB is the product

for bathrooms.

ClearPath® offers one of the most innovative ways to achieve a barrier-free entry without modifications to the floor joists or having to install steel hanger systems for set-up. The foundation of the system is TI-ProBoard®. Its unique design offers the ability to simply remove the subfloor and install TI-ProBoard directly on top of the floor joists.

Once installed, float a mudbed on top of TI-ProBoard to the surrounding floor area. Let cure and come back over with the 2m wide WaterArmor® Waterproofing Sheet Membrane to lock water out.

From today's modern design appeal to special needs requirements, ClearPath meets your changing lifestyle needs.

"Where Fashion Meets Function"

designation given by the Tile Council of North America when it included TI-ProBoard in its Handbook for tile installations back in 2017.

TI-ProBoard is manufactured by pultrusion. Made of fiber-reinforced, composite polymers with an integral fiberglass backing and tongue and groove design along the edges. For showers, simply remove existing plywood or OSB flooring and attach perpendicular to the floor joists.

The ClearPath Drain Plate comes with integrated drain assembly and offers flexibility in positioning of the plumbing. It is presloped and serves as a template for proper sloping of thin-bed that gets applied on top of the TI-ProBoard to surrounding floor area.

"No Structural Modifications Required"

"SIMPLE TILEABLE SOLUTIONS"

Earn CEU's with FinPan

Be sure to visit www.aecdaily.com to take our free online educational course to earn continuing CEU's. AEC Daily provides FREE online courses that provide state credit and many other association approvals, such as AIA, for architects, specifiers and interior designers.



There's never been a better time to proudly say we're American made. The complete product offering from FinPan is proudly made in the U.S.A.

3255 Symmes Road
Hamilton, OH 45015
800-833-6444

FOLLOW US





Try email marketing for free today!
